



LIGHTING TOWER | LTM9

4 x 1000W Metal Halide lamps / 360,000 lumens / 3-cylinder Yanmar engine



EASY TO USE AND VERSATILE

DESIGNED AS A SIMPLE, ROBUST AND SUPREMELY VERSATILE LIGHT AND POWER SOURCE, THE LTM9 IS A MANUALLY DEPLOYED MOBILE LIGHTING TOWER THAT EXCELS EVERYWHERE FROM CONSTRUCTION SITES TO EVENTS. EXPECT BRIGHT PERFORMANCE, DURABILITY, FLEXIBILITY AND RELIABILITY AS STANDARD.

Manoeuvrability on site.

Because the LTM9 is lightweight and reduces down to a very compact unit, it's easy to manoeuvre and transport.

For ultimate portability, the tower is mounted on a rigid trailer with high ground clearance for access to rough terrain.

There's a tow bar for shifting your tower around site, as well as forklift pockets and a single-point lift for easy loading onto other larger trailers.

When the mast is retracted, it sits flat across the top of the unit, retaining a compact footprint for easy portability.



Easy to use.

So that you can tailor the height and focus of your lighting, the LTM9 has a winch-deployed 9m manual mast.

You can rotate the mast through a full 360° even when it's fully raised for quick, easy positioning of light.

We've equipped this tower with an intuitive, digital control panel, with easy to read information, as well as performance data.



Access all areas.

It's quick, easy and safe to service the LTM9 via two large panel doors, keeping downtime to a minimum.

Mechanical and electrical checks can be done easily from both sides of the machine and at a comfortable height.

The LTM9 has been designed to provide access to the whole unit, including the control panel, fuel tank, engine and auxiliary sockets.



Safety and security.

Four easy to deploy stabilisers, with two extending outriggers make this a stable lighting tower even on uneven terrain. There's also a bubble level indicator for setting up on rough terrain.

Because site security is paramount, the control panel, engine and fuel tank can be locked, meaning you can leave these lighting towers in situ for long periods.

The LTM9's positive stop winches make it safe to lower or raise the mast to the ideal lighting position for any application.

You can stop the engine quickly in an emergency with the external stop button.

Flexible performance.

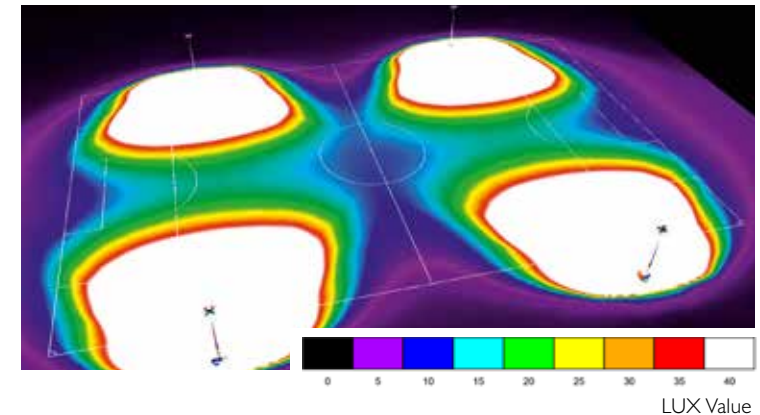
Noise levels are low (just 71dBA at 7m), the LTM9 is therefore an ideal tower for events.

Time is money, so there's up to 66 hours of run time at 75% load, courtesy of a large fuel tank.

With two auxiliary power sockets to supply onsite power tools, this tower is an asset on site, 24 hours a day.

The four robust 1000W metal halide bulbs will last the distance even in extreme conditions. Each bulb provides 90,000 lumens, for a maximum brightness of 360,000 lumens.

SPECIFICATION	
Engine type	Yanmar 3TNM72-GHFCG 3cyl water cooled 7.5 / 9.5kW at 1500 / 1800rpm Diesel
Fuel tank capacity	114 litres
Fuel consumption	50Hz - 2.25l/h 60Hz - 2.65l/h (At 100% load prime)
Running time	66 hours
Average sound pressure level at 7 metres	71dB(A)
Alternator	4 Pole, Class H, 230V, 50Hz / 240V, 60Hz
Control panel	New digital panel as standard
Prime power rating	50Hz - 5.1kVA / 60Hz - 6.0kVA
Auxiliary power	2 x 16A, 230V Schuko sockets
Mast maximum height	9000mm
Mast operation	Manual
Maximum operational wind speed	80km/h
Stabilisers	4
Lamp specification	4 x 1000W, metal halide
Lamp power	90,000 Lumens per lamp, 360,000 Lumens total
Dimensions for transport (LxWxH)	4345mm x 1450mm x 1890mm
Dimensions fully deployed (LxWxH)	2760mm x 2780mm x 9070mm
Weight unfuelled	834kg
Weight fuelled	911kg
Canopy	Steel, 1,000hr salt spray tested
Lifting	2 Fork pockets, central lift point





ONE COMPANY, OVER 300 MACHINES.

Your nearest JCB dealer

LTM9 Lighting Tower

4 x 1000W Metal Halide lamps / 360,000 lumens / 3-cylinder Yanmar engine

JCB Power Products, Rocester, Staffordshire, United Kingdom ST14 5JP.

Tel: +44 (0)1889 590312 Email: salesinfo@jcb.com

Download the very latest information on this product range at: www.jcbgenerators.com

©2009 JCB Sales. All rights reserved. No part of this publication may be reproduced, stored in a retrieval system, or transmitted in any form or by any other means, electronic, mechanical, photocopying or otherwise, without prior permission from JCB Sales. All references in this publication to operating weights, sizes, capacities and other performance measurements are provided for guidance only and may vary dependant upon the exact specification of machine. They should not therefore be relied upon in relation to suitability for a particular application. Guidance and advice should always be sought from your JCB Dealer. JCB reserves the right to change specifications without notice. Illustrations and specifications shown may include optional equipment and accessories. The JCB logo is a registered trademark of J C Bamford Excavators Ltd.

