



## JCB TRACKS & TRACK RUNNING GEAR

A complete customer support solution.





INTRODUCTION.

OLD WORN TRACKS AND RUNNING GEAR ON YOUR MACHINE CAN LEAD TO EXTRA WEAR AND TEAR, LOSS OF POWER, INCREASED FUEL CONSUMPTION AND REDUCED WORKING LIFE – ALL OF WHICH – COST YOU TIME AND MONEY!

JCB's global network of dealers can help keep your machine working longer and harder by supporting all your undercarriage component needs.

From the smallest Micro or Dumpster to the largest tracked JS Excavator, JCB dealers offer the knowledge and skills to help keep you working and earning!

JCB Service and our dealer network support offers customers excellent off the shelf parts availability, competitive prices and excellent quality for the wide range of:

Dumpsters

Mini Excavators

JS Excavators

Tracked ICX

Micro Excavators

Midi Excavators

Skid Steel Loaders



CONTENTS

Designed to Perform Tested to Last	04
Track Running Gear	06
JCB Steel Tracks	08
What is the Risk?	10
JCB Rubber Tracks	12
JCB Rubber Track Pads	15
Simple Handy Hints	18
Service Support 24H - 7 - 365 - 70 Years	19



DESIGNED TO PERFORM TESTED TO LAST.

JCB DEALERS USE ONLY GENUINE JCB PARTS, SO WHETHER YOU NEED TOTAL REFURBISHMENT OF YOUR TRACKS OR REPLACEMENT CHAINS, ROLLERS, SPROCKETS AND IDLERS, YOU KNOW THAT THE NEW PARTS ARE OF THE HIGHEST POSSIBLE QUALITY.

All JCB components are made by JCB or in partnership with leading manufacturers. Components introduced on our machines and supported in the Aftermarket are specifically designed tested and undergo a minimum 1,000 hours endurance test to ensure they perform to meet the highest possible quality and performance levels. All JCB components are tested in CAD, undergo FEA design analysis and are engineering verified. Once passed, samples are endurance tested at one of our test facilities. Only once parts have been verified are they introduced – which means we have maximum confidence in quality and performance.

What we test for?

Testing ensures we get the best products. As a business we understand the need to be cost competitive but we truly believe 'you get what you pay for.' All JCB tests are designed to maximise product life and performance – after all what use is a track with 50% tread left when it splits or breaks – or even worse impacts on machine or operator performance?



JCB tests include:

- Quality manufacturing process – same quality every time
- Metallurgical / chemical / material composition specification – performance every time
- Wear performance – length of use, dynamics of wear rates, in conjunction to other components
- Kerb testing – performance testing based on everyday use and abuse
- 1,000 hour track endurance – Circa 5000+ machine hours performance
- Cleat pull out testing – worst case scenario testing



- Operator and machine whole hand/arm vibration levels - required by law to meet stringent safety levels
- System impact – performance of other undercarriage components in relation to the part
- Continual improvements and process refinements – better and better production every time
- Spin turn and detracking testing
- FEA and design testing

In summary, we know our parts perform time-after-time which is how we've built our own or other brands perception of JCB or the leading manufactures we use... **Does everyone else go to this trouble?**

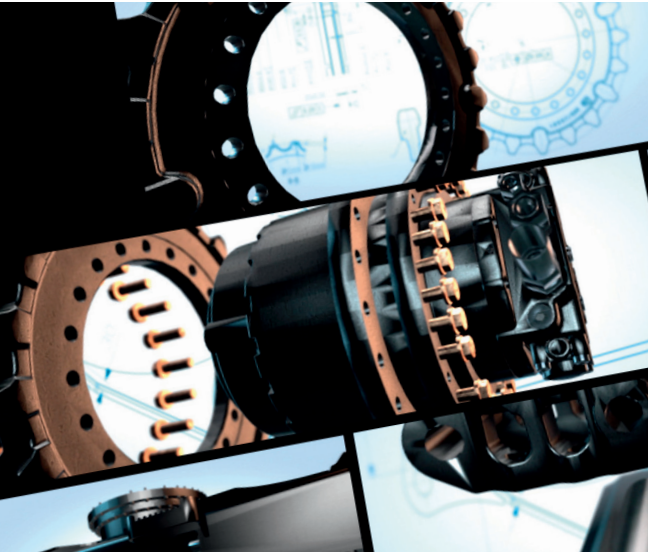
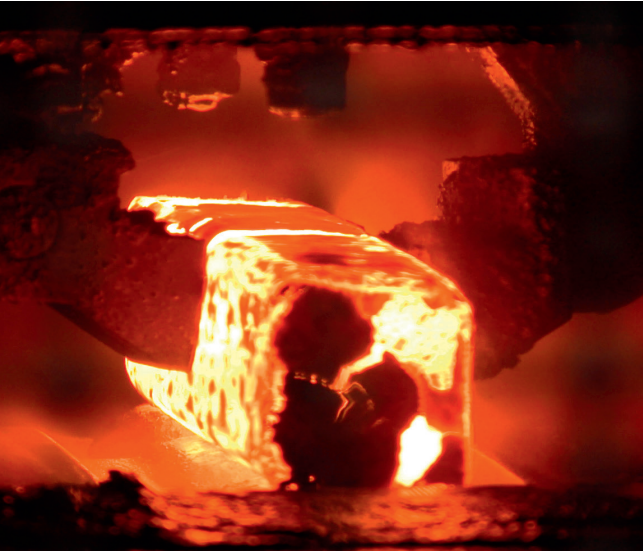
Design / Manufacturing / Testing

By JCB and our suppliers maintaining and controlling our production materials, design, specification and processes - we ensure our parts meet our own stringent quality and performance requirements.

We continually look for and improve performance, quality and reliability through:

- Design
- Manufacturing
- Testing
- Assembly
- Parts & Service Support

Whilst re-investing this back into the whole process again - and passing this investment back to our customers. We know other parts or machine manufacturers don't provide this continuity of supply and support.

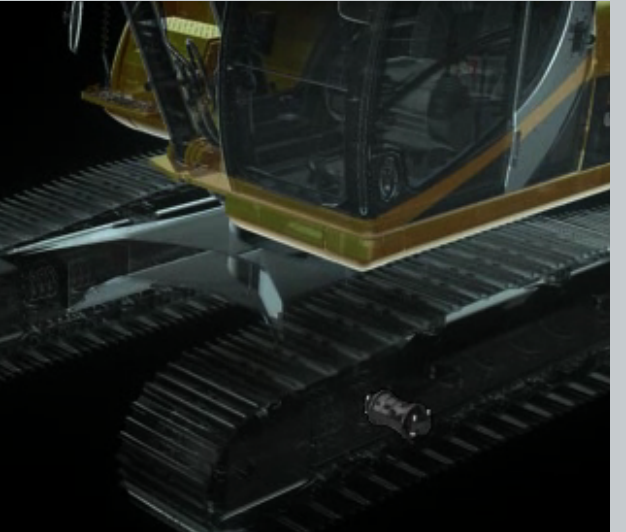


Ask for a Personalised Quote

Tracks and undercarriages are a major component so often overlooked by most, but your JCB dealer is able to check and measure tracks for you if needed, advise you on the best course of action and then provide a quotation tailored to your specific needs, application and requirements.

What's more – if you ask for a quote as part of your routine maintenance, JCB can carry out the work whilst the machine is being service ensuring minimum downtime.

Because we understand each application is different we spec your machine correctly for the job.





# TRACK RUNNING GEAR.

## JCB SERVICE SUPPORT UNDERCARRIAGES THROUGHOUT THE EXTENSIVE RANGE OF JCB TRACKED PRODUCTS.

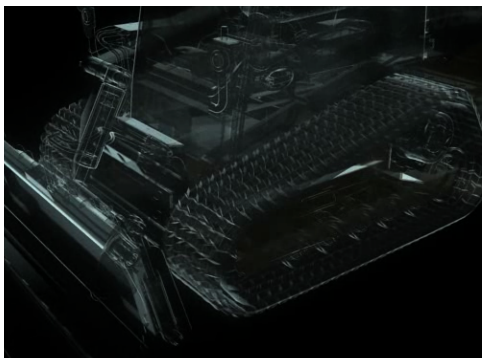
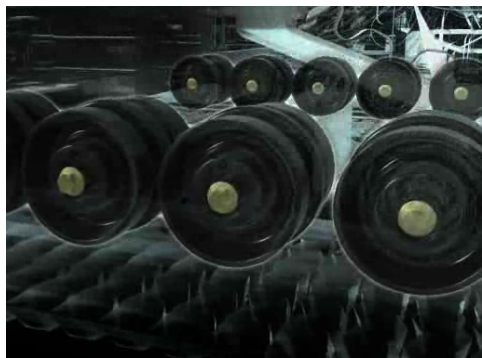
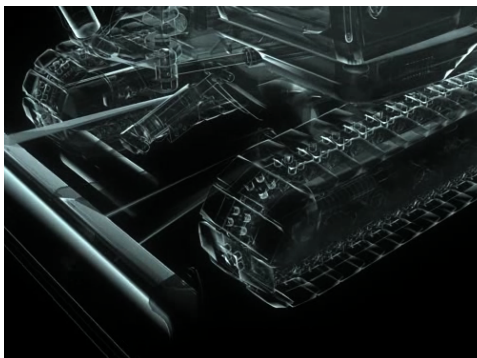
This means that JCB dealers support a huge range of parts all with excellent availability and back-up.

Track running gear – sprockets, idler wheels, rollers and track guides are one of the most important components of a machine, yet are often one of the most overlooked.

If overlooked, the effects are

- Machine downtime
- Premature wear of other parts
- Reduced performance
- Reduced operator comfort
- Maximum life cycle
- Minimum risk
- Time and money

JCB's global dealer network are there to support you with all your requirements from undercarriage analysis to parts support and installation – 24/7/365.



## UNDERCARRIAGE SYSTEMS ARE DESIGNED TO WORK DYNAMICALLY TOGETHER IN CONJUNCTION WITH THE MACHINE/APPLICATION/OPERATION, JCB MACHINES AND SYSTEMS ARE ALL DESIGNED AND TESTED TO WORK TOGETHER. FITMENT OF AN INFERIOR QUALITY OR LESS ROBUST PRODUCT WILL HAVE AN ADVERSE IMPACT ON THE PERFORMANCE AND WEAR RATES OF OTHER COMPONENTS.

Here are a few examples of our steps to provide the best possible product:-

### Idler/Tensioner/Components

Induction hardened rail surfaces to excellent resistance to wear

### Carrier Rollers/Repair kits/Components

- Single or double flange
  - Heat treated, induction hardened
  - Friction and robot welded
  - Submerged leak tests
- Various configurations with cold climate options available

### Track Shoes/Grousers

- Standard and Heavy Duty Grouser Profiles
- Hot Rolled, heat treated shoes
- 350 – 1200mm shoe widths
- Mud holes
- Mud clearing profiles

### Track Components

Extensive range of links, pins, bushes, seals and grousers to support all JCB Tracks.

### Track Guides/Guards

Single piece or full sections available.

### Sprockets/Nuts/Bolts

Pitch & track motor options from Dumpster to JS460. Cast or forged options, with full induction hardening of teeth for maximum wear performance with chain. Through hardening of entire profile for maximum performance.

### Track Rollers/Repair Kits/Components

- Single or double flange
  - Heat treated induction hardened
  - Friction and robot welded
  - Submerged leak tests
- Various configurations with cold climate options available.



## THE JCB RANGE AND DESIGN.

The JCB Steelmaster and Steelmaster PLUS ranges of Steel Tracks and Track Running Gear are designed to meet the exacting requirements of JCB Excavators. Offering high quality, reliability and performance and excellent value for money, whatever your budget, application and requirement.

### JCB STEELMASTER

A range of tracks and parts for excavator undercarriages from JCB. Designed for use on 18-24 tonne OE machines from JCB, these tracks are available from JCB Service as full assemblies or parts. As with all JCB products these are excellent quality, durable and now offered at an even more competitive price.

### JCB STEELMASTER PLUS

Designed specifically for JCB excavators fitted at OEM and manufactured by leading manufacturers such as Berco or ITM. These parts are the premium range from JCB Service who offer a one-stop-shop from 800kgs to 42 tonne JCB excavators parts for the complete range.

### Quality – The Hidden Story

Like so many products today – JCB customers are being offered lower and lower priced products. The concern for JCB is that often when low cost parts are fitted, this jeopardizes the performance of a JCB machine and impacts on our highly valued customers.



### JCB Track Link

Uniform induction hardening, heat treatment process and timing, ensures good and consistent wear performances across the entire link rail section.

Heat treatment process consistency guarantees the same wear patterns on the entire track chain - overall improving durability.

Consistency of wear behaviour provides a common wearing profile across the entire undercarriage system and across the JCB machine fleet - for continued peace of mind.

### Track Link Sections

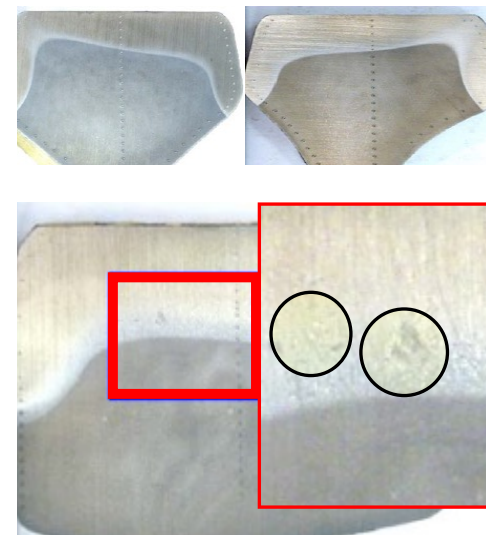
JCB Track link sections are forged and manufactured using controlled quality methods and consistent high material specifications. The following are comparisons made from the JCB to other competitor link sections.

### Examples of Competitor Link Sectional Analysis

Uncontrolled and cost saved processes result in asymmetric and rapid hardening heat treatment, which jeopardises structural integrity. This can result in parts failure due to premature wear, or track links wearing through, to non-hardened sections - causing premature failure of parts on differing material structures.

Poor steel alloys, low-quality induction processes and heat treatment can cause a reduction in mechanical resistance to fatigue (compression, traction, torsion) due to lack of forming cohesion through the material layers.

Both examples show a high risk of failure.



### JCB Bushes

JCB Bushes goes through internal and external heat treatment following the machining process and induction hardening. This ensures the carbon density and hardened profile on the inside and outside is higher than standard induction hardening, giving additional wear performance and resilience to the inside and outside to match wear characteristics on the pins and sprockets.

### Examples of Competitor Radial Cross Section

Low quality steel alloy and induction hardening is visible which again reduces mechanical resistance to fatigue (compression, traction, torsion) due to lack of forming cohesion through the material layers. These areas would be susceptible to failure in impact applications or during interaction with sprocket.

### Examples of Competitor Horizontal Cross Section

The horizontal cross section areas of the competitor sample are thinner at areas where most wear would be prevalent which is through the link rail sections, which will cause premature failure before the remaining part needs to be replaced.



### JCB Pins

JCB Pins undergo a full differential quenching treatment which assures the whole pin offers improved resistance to bending or fatigue during machine operation, over and above just induction hardening the surface.

### Examples of competitor pins

The 2 examples show only superficial induction hardening to the surface, showing visible poor quality raw material imperfections (foundry and process issues). In addition to the lower structural performance this entails with reduced structural resistance to machine traction (pin under load), especially in heavy duty applications.



Material phasing is visible through the pin section, showing incomplete hardening and heat treatment. As the hardening processes, unfinished tension remains between the internal and external materials which can cause cracks especially on the external surface when under load during heavy duty or high impact applications.



### JCB Track & Carrier Rollers

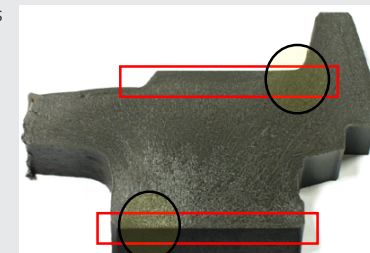
JCB Track and Carrier Rollers are designed and manufactured with the highest possible quality in mind, as effectively these bear the entire weight of the machine through to the ground and needs to be highly resistant to wear, impacts and vibration.

The section shows rigorous through hardening of the outside diameter area on which the link rails interact, in addition to the internal area which requires wear resistance to the pin and failure of bell-mouth.

### Examples of Competitor Track & Carrier Rollers

Only visible roller heat treatment is on the rail section which is minimal and ends short of end flange. This will result in premature failure of the roller and increased wear of chain, especially on outside edges which are impacted most when turning or in sloped applications.

Roller pin section carries minimal hardening with no hardening of bell-mouthing, therefore there is a high risk of failure or collapse.





## WHAT IS THE RISK?

**OUR VALUES FOCUS ON QUALITY AND CONSISTENCY WHICH ENSURES YOUR MACHINES AND THEREFORE, UNDERCARRIAGE COSTS PER HOUR ARE AS LOW AS POSSIBLE, WITH MINIMAL DOWNTIME OR ISSUES IN THE FIELD.**

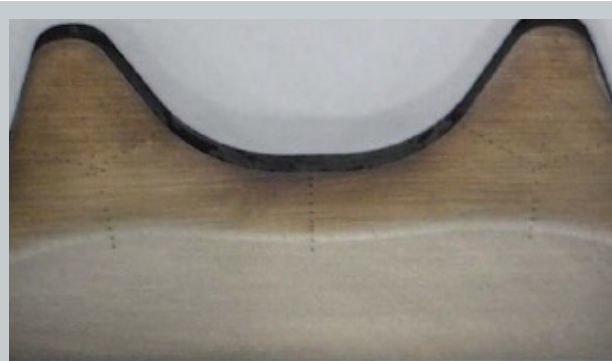
By taking the time to invest in our material source, manufacturing processes, design, testing and validation, JCB do everything in our power to ensure a product fit for our machines and customers. As the cut samples in the previous page show examples of the 'hidden story' and why you can't always see what you're paying for - but as they say, you get what you pay for.



### Competitor Sprockets

Competitor sprocket segment 1, shows low internal integrity and only slight / uneven quenching heat treatment which could cause chipping, spalling, breakage, very poor wear life and impact on performance and life of the chain and sprocket.

The second segment shows no hardening treatment at all which would perform very poorly especially if used on a hardened chain system.



### JCB Sprockets

JCB offer a range of forged and cast sprocket segments, both types provide deep section induction and through hardened profiles through the tip and the root - for maximum structural integrity.

Lack or loss of control over any of the JCB vertical supply chain processor material, right through to assembly on the production line for the machine can risk product performance - a risk which we are not willing to take. As a business our values of quality and reliability rely on maintaining this control, so we always know our customers get the product they expect and keep their machine working, productive and earning.

Quality costs, and this is what forms our mantra "buy genuine" because we believe you get what you pay for. From the design, quality and testing we provide, right to the price you pay, is excellent value for money.

We've even take some parts in the Aftermarket and compared to our own - the differences, on some, from the outside are difficult to spot, the differences from the inside are clear, as is the performance. So whilst a part may appear to be the same, unless you buy a genuine JCB part, from a JCB dealer can you be sure you are going to get the performance you need.

**If a customer saves 5% on the cost of a chain but it fails 25% sooner, it's not actually a saving.**

**AT JCB WE TRULY BELIEVE THAT YOU GET WHAT YOU PAY FOR. OUR INVESTMENT IN TIME, DESIGN, TESTING AND VALIDATION, ON MACHINES, IN APPLICATION BEFORE WE SELL PRODUCTS REMOVES THE RISK OF PREMATURE FAILURE AND DOWNTIME.**

Like many products – you can buy cheaper, but JCB and our market leading partners have designed the solutions specific to the machine. We know the quality and how the quality interacts with other components. Is the risk worth it, as after all one failure is often the cost difference? Undercarriages are an expensive investment and can account for as much as 20% of the price of a new machine, representing much more over the life of the machines maintenance costs.

This highlights the importance of right-first-time, along with the quality and reliability of product to allow you to fit and forget.

### Examples of Competitor Failures





## THE JCB TRACKMASTER RANGE.

As part of our on-going drive to deliver the best customer service within our industry, JCB Service offer two comprehensive ranges of rubber tracks, each catering for the specific requirements of individual customers.

### JCB Trackmaster Tracks

JCB Trackmaster and Trackmaster PLUS are a range of JCB branded rubber tracks available to fit all JCB and many other makes of machine, which means they are fully designed to JCB's demanding quality standards and performance expectations.

### JCB TRACKMASTER

JCB Trackmaster tracks are available on original equipment JCB Mini and Midi Excavators fitted with rubber tracks.

### JCB TRACKMASTER PLUS

Premium range of tracks, carrying the JCB logo. Trackmaster PLUS tracks are ideally suited to the customer who wants nothing less than the best.

Manufactured and tested to the highest standards in conjunction with leading rubber technology experts, JCB Trackmaster PLUS tracks are designed with their respective machine in mind, giving unparalleled performance and customer "peace of mind".

### Service

JCB Service stock tracks to service current and old machine models from JCB and other makes. From our extensive stock we can supply overnight to orders received by 17.00 (larger tracks may need to be shipped separately so they may not arrive until mid-day the following working day).

### Range

Consisting of 9 different widths stretching from 180mm to 450mm, within a range comprising over 44 "live" part numbers. This range is defined on a database which can be accessed by any JCB dealer via JDS.

### Why Buy JCB Rubber Tracks

#### Features & Benefits

- Superior quality rubber compounds and steel components ensuring a longer lifetime, giving very low costs per hour and improved profitability
- Advanced lug design increasing the ground contact area by over 50% more than equivalent competitor's tracks. This gives better tractive effort, leading to a longer track life and greater operator comfort
- Metal parts have patented v-shape where they meet the track running gear providing superior ride comfort
- Offset lug design improves ride comfort and puts less stress on the track and undercarriage components
- Patented anti-detracking system reduces downtime and lowers costs
- Reinforced metal inserts reduces ground pressure and minimizes ground surface damage
- JCB Trackmaster Tracks are supplied with 18 months warranty when fitted by a JCB Dealer\*
- JCB Trackmaster PLUS are supplied with a warranty from 12 months when fitted by a JCB Dealer\*
- JCB Trackmaster & Trackmaster Plus tracks fit a huge range of JCB and competitor products

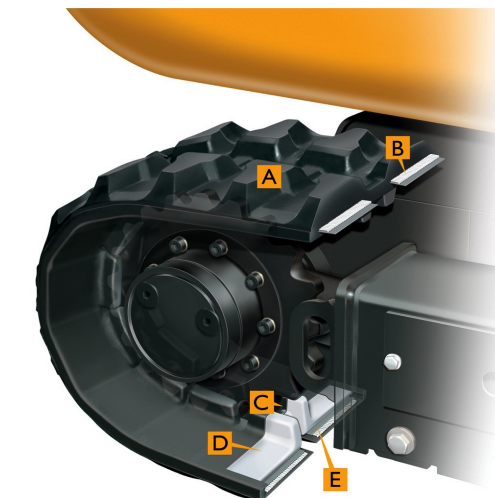
\*T&C's Apply

JCB CONDUCT ARDUOUS TESTING FROM DESIGN, MANUFACTURING AND ENDURANCE, AS WITH ALL RUBBER TRACK PRODUCTS CARRIED OUT ON JCB AND COMPETITOR PRODUCTS AT THE JCB QUARRY, THE 'RIVER BED TEST' - INCLUDING THE HARDEST TEST WE COULD FIND TO PROVE OUR QUALITY IS THE BEST.

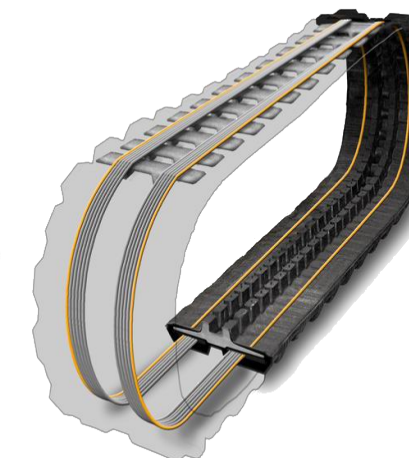
Due to this fact JCB Rubber Tracks can benefit from qualities such as:

Less likely to stretch and fail if overstressed

No weak point in the track gives it more strength than overlapping track (up to 40%)



- A RUBBER COMPOUNDS**  
Designed to resist tearing and wear. This gives longer life, lower cost per hour and better profitability.
- B STEEL CORD**  
The backbone of the track. Designed for strength so that the track holds together under tension.
- C PATENTED ANTI-DETRACKING SYSTEM**  
Keeps the track where you want it. Most track failures are a result of detracking, where the sprocket rides over the internal lugs, increasing tension and snapping the steel cords. Preventing this increases the life of the track, reduces machine downtime and increases the customer profitability.
- D CORE BAR**  
Gives the track lateral strength, making the machine more stable by transmitting it's weight across the full width of the track.
- E UNDER-LAYER OF RUBBER**  
Sits between the core bar and the steel core enabling a better "fit" between the sprocket and track so that they both work in harmony.



Cleat pull-out text on competitor products



PLEASE SEE OVERLEAF FOR A FULL LIST OF JCB RUBBER TRACKS



JCB RUBBER TRACKS.

THE ONLY JCB TESTED & APPROVED TRACKS IN THE MARKET

Range	Machine Fitment	Description	Track	Pitch	12 Month Warranty	18 Month Warranty	JCB Approved	Continuous Steel Core	Anti Detracking	Interlocking Core	Pro-Edge	Tapered Core Metal
Micro & Dumpsters	8008 CTS / Dumpsters	JCB Trackmaster	332/H9909	Short	-	Yes	Yes	Yes	Yes	-	-	-
		JCB Trackmaster PLUS	331/54175	Short	Yes	-	Yes	Yes	Yes	Yes	Yes	Yes
Micro	8010 CTS / Micro / Micro +	JCB Trackmaster	332/H9907	Long	-	Yes	Yes	Yes	Yes	-	-	-
		JCB Trackmaster PLUS	331/42435	Short	Yes	-	Yes	Yes	Yes	Yes	Yes	Yes
Mini	8014 CTS	JCB Trackmaster	332/H9889	Long	-	Yes	Yes	Yes	Yes	-	-	-
		JCB Trackmaster	332/L5222	Short	-	Yes	Yes	Yes	Yes	-	-	-
		JCB Trackmaster PLUS	331/I6011	Long	Yes	-	Yes	Yes	Yes	Yes	Yes	Yes
Mini	8016 CTS / 8018 CTS / 801X (OLD)	JCB Trackmaster	332/H9847	Long	-	Yes	Yes	Yes	Yes	-	-	-
		JCB Trackmaster	332/L5153	Short	-	Yes	Yes	Yes	Yes	-	-	-
		JCB Trackmaster PLUS	331/40765	Long	Yes	-	Yes	Yes	Yes	Yes	Yes	Yes
		JCB Trackmaster PLUS OLD	231/35100	Long	Yes	-	Yes	Yes	Yes	Yes	Yes	Yes
Mini	8020 CTS	JCB Trackmaster	332/L7701	Short	-	Yes	Yes	Yes	Yes	-	-	-
		JCB Trackmaster PLUS	331/69013	Long	Yes	-	Yes	Yes	Yes	Yes	Yes	Yes
Mini	802 (OLD)	JCB Trackmaster	332/H9893	Long	-	Yes	Yes	Yes	Yes	-	-	-
		JCB Trackmaster PLUS	233/00700	Long	Yes	-	Yes	Yes	Yes	Yes	Yes	Yes
		JCB Trackmaster PLUS	232/I6800	Long	Yes	-	Yes	Yes	Yes	Yes	Yes	Yes
		JCB Trackmaster	332/H9893	Long	-	Yes	Yes	Yes	Yes	-	-	-
Mini	8025 ZTS / 8025 CTS (Short Carriage)	JCB Trackmaster PLUS	331/58982	Long	Yes	-	Yes	Yes	Yes	Yes	Yes	Yes
		JCB Trackmaster PLUS	331/62516	Long	Yes	-	Yes	Yes	Yes	Yes	Yes	Yes
		JCB Trackmaster PLUS	333/R6176	Short	Yes	-	Yes	Yes	Yes	Yes	Yes	Yes
		JCB Trackmaster PLUS	331/36998	Long	Yes	-	Yes	Yes	Yes	Yes	Yes	Yes
Mini	8025 ZTS (Long Carriage)	JCB Trackmaster PLUS	333/R1682	Short	Yes	-	Yes	Yes	Yes	Yes	Yes	Yes
		JCB Trackmaster	332/H9876	Short	-	Yes	Yes	Yes	Yes	-	-	-
		JCB Trackmaster PLUS	232/35100	Long	Yes	-	Yes	Yes	Yes	Yes	Yes	Yes
		JCB Trackmaster PLUS	333/R1686	Short	Yes	-	Yes	Yes	Yes	Yes	Yes	Yes
Mini	8030 ZTS / 8035 ZTS / 803 (OLD)	JCB Trackmaster	332/H9901	Long	-	Yes	Yes	Yes	Yes	-	-	-
		JCB Trackmaster PLUS	232/48400	Long	Yes	-	Yes	Yes	Yes	Yes	Yes	Yes
Mini	804	JCB Trackmaster PLUS	331/52909	Short	Yes	-	Yes	Yes	Yes	Yes	Yes	Yes
Mini	8040 ZTS	JCB Trackmaster PLUS	331/52429	Short	Yes	-	Yes	Yes	Yes	Yes	Yes	Yes
Mini	8040 ZTS / 8050 ZTS	JCB Trackmaster	332/H9905	Short	-	Yes	Yes	Yes	Yes	-	-	-
Midi	8055 ZTS - RTS / 8052 CTS (OLD)	Trackmaster PLUS	331/48024	Short	Yes	-	Yes	Yes	Yes	Yes	Yes	Yes
Midi	8065 RTS / 8060 CTS (OLD)	JCB Trackmaster	332/H9864	Short	-	Yes	Yes	Yes	Yes	-	-	-
		JCB Trackmaster PLUS	333/W6787	Short	-	Yes	Yes	Yes	Yes	Yes	Yes	Yes
Midi	65R / 67C	JCB Trackmaster	332/H9864	Short	-	Yes	Yes	Yes	Yes	-	-	-
		JCB Trackmaster PLUS	333/W6787	Short	-	Yes	Yes	Yes	Yes	Yes	Yes	Yes
Midi	8085 ZTS / 8080 ZTS (OLD)	JCB Trackmaster	332/H9870	Short	-	Yes	Yes	Yes	Yes	-	-	-
		JCB Trackmaster PLUS	331/I9130	Short	Yes	-	Yes	Yes	Yes	Yes	Yes	Yes
Midi	85Z / 86C / 90Z / 100C	JCB Trackmaster PLUS	333/W2422	Short	-	Yes	Yes	Yes	Yes	Yes	Yes	Yes
Skid Steer Loader	190 T / 1110 T / 320 T SSL	JCB Trackmaster PLUS	331/45856	Short	Yes	-	Yes	-	-	-	-	-
Skid Steer Loader	190 T / 1110 T / 450 T SSL	JCB Trackmaster PLUS	331/45857	Short	Yes	-	Yes	-	-	-	-	-
Skid Steer Loader	150 T SSL	JCB Trackmaster PLUS	333/L4732	Short	Yes	-	Yes	-	-	-	-	-
Skid Steer Loader	180 / 190 / 205 T SSL	JCB Trackmaster PLUS	333/L4920	Short	Yes	-	Yes	-	-	-	-	-
Skid Steer Loader	225 T SSL	JCB Trackmaster PLUS	333/P9137	Short	Yes	-	Yes	-	-	-	-	-
Skid Steer Loader	225 T / 260 T / 300 T / 320 T SSL	JCB Trackmaster PLUS	333/P6274	Short	Yes	-	Yes	-	-	-	-	-
Backhoe Loader	ICX T	JCB Trackmaster PLUS	333/L4920	Short	Yes	-	Yes	-	-	-	-	-

JCB RUBBER TRACK PADS.

JCB OFFER A WIDE RANGE OF RUBBER PADS WHICH BOLT DIRECTLY TO CHAINS (JCB GEOGRIPS), OR BOLT TO TRACK GROUSER PLATES (RUBBER TRACK PADS).

JCB Geogrip Pads

Alternative to large steel tracks which damage the ground surface and for which continuous rubber tracks are not available.

Each pad contains a core metal, surrounded by rubber which has been vulcanised onto the metal, using four bolts directly onto the track chain links of the machines undercarriage, in the same way as conventional steel shoes.

The pads are ideal for use in many applications especially utility road works and for rental customers – where damage to surfaces must be kept to a minimum. JCB Geogrips have the added benefit to the customer of only having to replace one pad when damaged rather than an entire track.

Each pad is manufactured using high durability anti-external-cut and anti-chunking rubber compounds, providing much higher durability than common clip on type pads, whilst ensuring noise and vibration are reduced compared to steel tracks.

JCB support Geogrip options for machines from 4 tonne to 24 tonne Excavators.





# JCB RUBBER TRACK PADS.

## Why Buy JCB Geogrip Pads

JCB have selected Geogrip pads for their quality, reliability and as a market leader in rubber track pad solutions – the following are some key selling points:-

- Geogrips use Bridgestone's latest "Pro-Edge" embedded core metals. The special rounded wing design combined with the tapered rubber tread lug profile disperses stress concentrations, significantly reducing edge-cut damage caused by riding over curbs or sharp obstacles.
- Geogrip's unique interlocking design reduces the build-up of sand, gravel, rocks and other material or objects in and around the undercarriage, thereby avoiding premature damage.
- Embedded core metals are specially treated using high quality bonding agents to ensure excellent adhesion between rubber and metal during the vulcanisation process. (This is similar to the bonding process used in Bridgestone's continuous rubber tracks).
- Rubber quality: Common between both the Geogrip and the Roadliner, yet far superior to other pads available is the high quality rubber compound. This makes Bridgestone pads able to go where others cannot and is therefore often the choice pad of customers using machines in very tough applications.
- The "Geogrip" tracks are different to the "Bridgestone Roadliner" tracks found on competitor models – here are some advantages of Geogrip:-
  - Geogrip has an interlocking design, Roadliner doesn't. This design protects the undercarriage and reduces build-up of material within it and helps reduce mud spilling out onto the highway when moving the machine off-site for transportation via trailer. Key for customers who have to keep public highways clear of slippery mud which could cause accidents.
  - Unlike the Roadliner and other alternatives on the market, the embedded steel inside the Geogrip is specially shaped to have 3 raised profiles running along its length (rather like the style of a triple grouser steel shoe), making a big difference increasing the adhesion between the rubber and metal, avoiding rubber removal - a common failure mode in the market where you can often see rubber pads with large lumps of rubber missing.

Machine	Pad Size	GeoGrip Assembly	Chain Assembly	GeoGrip Pad	Quantity Required	Bolt (4 Per Pad)	Nut (4 Per Pad)
8040	400mm	-	332/V6802	333/P5312	76	333/P5286	333/P5290
8045, 8050	400mm	-	332/V6806	333/P5312	76	333/P5286	333/P5290
8055, 8065	400mm	333/P5362	333/P5297	333/P5312	78	333/P5286	333/P5290
65R, 67C	400mm	334/S7942	334/S6998	333/P5312	78	333/P5286	333/P5290
8080	450mm	-	918/I0012	332/F1940	78	826/I0697	826/I0698
8085, 85Z, 86C, 90Z, I00C	450mm	335/B9893	335/C0141	332/F1940	80	333/P5301	826/I0697
JS115	500mm	331/62448	331/49843	331/51230	82	826/01066	826/01067
JS130, JS130LC, JS145LC, JZ140	500mm	331/51226	331/21730	331/51230	88	826/01066	826/01067
JS145HD, JS160, JS160LC	600mm	-	333/L9357	334/J9646	86	826/01066	826/01067
JS180-JS220SC, JZ235, JZ255	600mm	-	332/J7632	334/J9646	92	826/01066	826/01067
JS200LC, JS210, JS210LC, JS220LR, JS220LC, JS235	600mm	-	332/P4258	334/J9646	98	826/01066	826/01067
JS235HD	600mm	-	331/40484	334/J9646	94	826/01066	826/01067
JS240, JS260, JS260LC	600mm	-	332/J2268	334/J9646	102	826/01066	826/01067
JZ235LC	600mm	-	331/21574	334/J9646	98	826/01066	826/01067

For further information and fitment clarification, please contact your Regional Aftermarket Sales Manager or raise a product Techweb.

## Why Buy JCB Bolt-on Rubber Track Pads

JCB also offer a range of bolt-on track pads which can be fixed onto steel track plates where holes are provided.

Track pads can come specifically pre-drilled or bought without and the grousers drilled specifically for. The bolt holes need to be 2mm larger than the screw bolt studs diameter to install. This process has to be done to exact measurements in order for a perfect fit. Each pad comes with washers and "dome" nuts.

### Benefits include:

- Together with the cut resistant, anti-abrasion and anti-tear rubber formulation, it provides superior durability
- Protection of finished road surfaces from steel track damage and potential cost claims
- Reduced site noise
- Track pads can be easily and quickly mounted onto the steel track shoe plates of your crawler
- Machines (provided they are pre-drilled) increasing uptime and operational efficiency
- Option to replace only damaged pads - not an entire track! Keeping operator costs at a minimum
- On-site it only takes one person to equip a machine with the track pads within a few hours



## Bolt-on Track Pad Machine Fitment

Range	Description	Width	Part Number
<b>JS115</b> <b>JZ140</b> <b>JS130 LC</b> <b>JS145</b>	Pad	500mm	331/46967
	Pad	600mm	331/46969
	Pre Drilled Track Plate	500mm	331/46971
	Pre Drilled Track Plate	600mm	331/46971
	Track Plate - Nut	-	826/01067
	Track Plate - Bolt	-	826/01066





# SIMPLE HANDY HINTS.

IT MAY SEEM LIKE COMMON SENSE TO MOST OPERATORS, BUT EVEN THE QUICKEST OF TIPS CAN HELP SAVE YOU MONEY, SO HERE ARE A FEW OF OUR OWN.

- Keep your undercarriage clean and clear from obstructions. Dirt or material is friction, friction is wear, wear is cost
- Always check track tension is correct for ground conditions
- Track forward (forward is with the sprockets and track motors behind you)
- Carry out daily inspections of all track parts and abnormal wear
- Alternate digging side when not operating from the front
- Do not spin on tracks and alternate turning direction to spread wear evenly
- Check tracking speeds – high speed = higher wear
- Always use the narrowest shoes possible
- Avoid over tensioning tracks
- Always read the operator manual
- Inspect rubber tracks for chunks, cuts or tears
- Corrosion of inner chords on Rubber Tracks can cause tracks to prematurely wear

The aim is to achieve 100% wear of wearing parts which means - you use what you pay for and not for early failure.



## Top 10 Reasons to buy JCB Tracks & Track Running Gear

- |  |  |
|--|--|
| 1. Fully tested / approved and fitted to JCB machines              | 6. JCB world class customer support  |
| 2. Consistent quality every time                                   | 7. Comprehensive range for all new and old machines                                  |
| 3. OEM Quality at competitive prices                               | 8. Global stocking and delivery  |
| 4. Continuous material and quality control                         | 9. Validated for JCB machines  |
| 5. Minimum 12 months warranty on parts when fitted by a JCB dealer | 10. One stop shop from measuring, pricing, field service, fitting and field analysis |

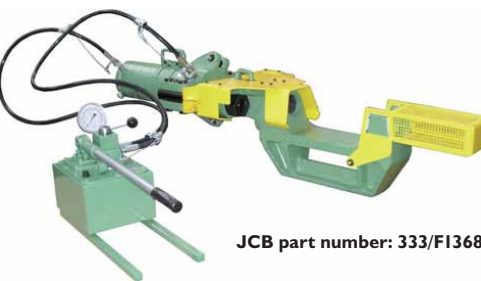
# SERVICE SUPPORT 24H - 7 - 365 - 70 YEARS.



To support JCB dealers and customers with Track refurbishment, analysis and sales, JCB dealers are equipped with a range of services, tools and equipment. Today JCB offer a range of portable track pin presses for on-site track fitting, tool kits to allow customers and dealers to review wear performance and a host of online tools to help identify the correct parts for the machines. This is in addition to the usual excellent off the shelf availability, global dealer support and technical staff available.

## Hydraulic Portable Track Pin Press

With the increased focus on Steel Tracks and Track Running Gear, the Track Pin Press presents a huge opportunity and added ability to support JS machines in the field or during their service. The hydraulic press enables the safe and quick breaking of chains and removal of pins, bushes and links in the workshop or on site for replacement or repair.



JCB part number: 333/F1368



## Track Measuring Kit

The JCB Track Measuring kit has been designed to be high quality and durable, due to the intended use and application. This kit allows both customers and dealers to assess applications and measure the undercarriages, important to:

- Understand component life remaining
- Allow scheduled replacements of parts before failure in the field
- Ensure that parts are still fit for purpose against wear rates
- Reduce down time, maximize component and systems life to give better machine value



JCB part number: 333/H4076



## JCB Link Repair Kits

JCB have a range of pre-bushed links and master pins available to speed up the replacement / repair of track chains on site.



For suitable track link repair kits check with your local JCB dealer

## JCB Steel Track Database

JCB have a host of different tools to help identify the correct undercarriage parts for your own machines.





World Parts Centre, Beamhurst, Uttoxeter, Staffordshire ST14 5PA [www.jcb.com](http://www.jcb.com)