

SPRING/SUMMER 2018

# GUNN SHOT

THE CUSTOMER MAGAZINE FROM GUNN JCB



- NEW JS X SERIES
- 50 NEW MINIS FOR SPEEDY HIRE
- OUT AND ABOUT WITH GUNN JCB
- NEW JCB TELETRUK LOGISTICS RANGE

**JCB**

GUNN JCB



# WELCOME

Following the disruption to sites caused by snow and poor weather in March, we are now back in the midst of a very busy market. House building and related industries continue to lead the charge and are creating strong demand across the product range.

The all new JCB crawler excavator, the 220 X, has been very well received by all of our customers who have been lucky enough to test the first machines to arrive. Built to be rugged, whilst also giving the best ever operator comfort, reliability and durability, these all new excavators herald the start of a new generation of JCB excavators.

At the smaller end of the scale, the new 1-2 tonne range of four mini excavators is also now in our depots. Built for ease of use and easy maintenance – no other mini digger has 500 hour grease intervals. Simple, safe to use, tough and built to last.

The new access platforms are already proving a hit with many new customers. With the new range of JCB built site dumpers, including the 7 tonne Hi Viz cab version, we are in the strongest ever position to provide you with the machines you need.

We continue to invest in our people, our premises and our systems to ensure that you also have the best possible parts and service support.

Thank you for your business so far this year. We look forward to working with you for a strong second half to 2018.

**Paul Hartshorn**  
Managing Director

# NEW STARTERS

Due to exceptional growth in the business, we are delighted to welcome the following members to the Gunn JCB team:

Employee	Depot	Job Title
Chris Moston	Altrincham	Access Salesman
Liam Riley	Altrincham	Service Controller
Layla Syed	Altrincham	Service Controller
Billy Hayes	Altrincham	Service Engineer
Jack Molloy	Altrincham	Improver Engineer
Travis Lannin	Altrincham	Trainee Engineer
Stuart Cole	Hereford	Service Engineer
Nick Leach	Longridge	Service Engineer
Liam Smith	Marchington	Service Engineer
Beverley Taylor	Marchington	Parts Supervisor
Ryan Matthews	National	Service Engineer
Adam Yates	National	Service Engineer
George Collins	National	Service Engineer
Nigel Jones	Ruthin	Service Engineer
Scott Moreton	Stoke	Partsman
Mark Dixon	Stoke	Service Engineer

# RETIREMENT FUN ON THE CARDS FOR STEVE

Earlier this year we bid farewell to Steve Nixon, Aftermarket Director, who retired on Friday 23rd February 2018 after working for Gunn JCB for almost 30 years!

Steve joined Gunn JCB in May 1988 as General Parts Manager after completing nearly 15 years working for JCB. In 1996, he was appointed to the Board of Directors and was made Parts and Service Director (which was later changed to Aftermarket Director). In 2000, Steve became one of the joint owners when the management buyout of the company was completed. In that time, he ensured that customer care and support remained top of our agenda. We held a richly deserved retirement meal for Steve Nixon at Cresta Court in Altrincham to celebrate his long and exemplary career in March which was attended by many of the team who wanted to wish him all the best for the future. Steve now plans to spend more time with his family, including his eldest daughter and son-in-law who have just moved home from Australia with their children. Steve has also been helping to plan his youngest daughter's summer wedding and is then looking forward to getting fit for a 'coast to coast' walk later this year with his wife. In addition to many more hours on the golf course, Steve will be spending more time in France where he and his wife have a small property. We were very sad to see Steve go but we're sure you will join us in wishing him a long and happy retirement.



# APPOINTMENT GIVES A LIFT TO ACCESS SALES

When JCB introduced its exceptional new range of Access Platforms last year, we made the decision to recruit a specialist sales person to ensure we served the market properly. We are therefore very pleased to welcome Chris Moston to the Gunn JCB team as our new Access Salesman. Chris joined us in March having spent 30 years in the industry; serving his time with Kato Cranes and Access Sales as an engineer. He also looked after an access platform range at Hewden Hire and Nationwide Powered Access and was latterly Regional Manager at AFI Powered Access, looking after 8 depots. Immediately prior to joining Gunn JCB, Chris set up a platform division for J K Ashbrook. We wish Chris a long and successful career with Gunn JCB.



# WE SCOOPED TWO AWARDS

Gunn JCB was delighted to win two awards at the annual JCB awards ceremony that took place earlier in the year. The first accolade we received was for the JCB 'Dealer Award' for the most construction sales in 2017. The second was awarded to one of our construction salesmen, Mark Robinson, who won the JCB 'Salesman of the Year Award' for selling to the most customers in 2017. Well done Mark!

**Thank you to all of our customers for your business and enabling us to win these prestigious trophies!**



# MEET THE AFTERMARKET TEAM

We work very hard as a team to delight our customers with a consistently exceptional service whichever depot they deal with. We have now appointed two regional managers to cover the north and south of our territory to oversee every area of our parts and aftermarket services.

**Andy Shepherd** has been appointed as Northern Regional Parts and Aftermarket Manager. After getting his degree from the University of Liverpool, he studied Engineering at Lancaster before joining the workshop team at our Altrincham depot. Andy has worked on most machines in the range including excavators, backhoe loaders and telehandlers, as well as some of the more compact JCB models such as skid steer loaders and tandem rollers.

This time spent with the service department has ensured Andy has real, hands on experience with the products that our customers use daily and he uses this knowledge to inform his approach to providing the best aftermarket care possible as a member of the aftermarket team.

An advocate of the benefits of JCB genuine parts, both in terms of their reliability and performance, Andy can confidently support clients and help them to make the decisions to ensure the long-term efficiency and reliability of their machines in even the most challenging conditions.



**Andy looks after the following Gunn JCB depots:**

- Altrincham
- Isle of Man
- Longridge
- Ruthin

**Mobile number:**

**07740 826186**

**Email address:**

**andrew.shepherd@gunn-jcb.co.uk**

**Andy Jones** has been appointed as Southern Regional Parts and Aftermarket Manager. With 23 years of service under his belt, Andy has worked across most areas of the business including: parts, service, warranty, management and aftermarket. He's also a graduate of JCB's own Management Development programme. Day to day, Andy oversees the running of our parts departments and implements national and local campaigns.

Andy offers a person to person link to customers for any bulk parts purchase - whether it is a new JCB attachment, a large component or a refurbishment project. He is also able to offer help and advice on extended warranty, servicing or R & M agreements for individual and fleet machines and he can tailor bespoke packages to ensure customers' specific needs are met. We manage an extensive machine park across our territory, both manually or remotely with JCB's own LiveLink machine monitoring system. Thanks to our National Service team, customers are never too far away from us.



**Andy looks after the following Gunn JCB depots:**

- Hereford
- Marchington
- Shrewsbury
- Stoke
- West Bromwich

**Mobile number:**

**07740 826274**

**Email address:**

**andy.jones@gunn-jcb.co.uk**

# GOING THE EXTRA MILE

North Wales-based Gwynedd Forklifts is based in Conwy and has a further depot in Oswestry. The company supplies a range of new and used counterbalance forklifts trucks, side loaders, pallet trucks, telescopic handlers and reach trucks. For businesses not wishing to tie up valuable capital or who have a short-term need, Gwynedd Forklifts also offers contract hire and lease purchasing schemes.

As an existing Loadall and Teletruk customer, the company knows Gunn JCB well and when the opportunity to supply some new JCB Access Equipment range to one of their customers - in a very short timescale - they knew we would bend over backwards to make it happen. A call to our new Access Salesman, Chris Moston, at 4pm one afternoon in May was all Richard Singleton of Gwynedd Forklifts needed to make to order and take delivery of seven SI930E electric scissor lifts the very next morning at 11am. The units were on-site ready for a Saturday hire to a satisfied customer and will be added to the rental fleet once off-hired. Richard, who is the owner's son, was suitably impressed and has placed his thanks on record over the company's social media feeds.



*Pictured above: Chris Moston is shaking hands with Richard Singleton, who is the owner's son.*

## ONE STOP HIRE ALSO CHOOSES JCB ACCESS

The Chorley-based business has thirteen depots stretching from Cumbria to Warrington and is one of the fastest growing hirers of power tools, access systems and small plant in the North of England. A total of 15 pieces of JCB Access Equipment was recently delivered to add to the hire fleet and these will be delivered out round the depots. Another successful deal in the bag for Chris Moston!



**Need a swift access solution? Chris can be contacted on 07825 597408. Don't forget our finance offer on access equipment! Ends 31st July 2018. Please contact us for full terms and conditions.**

# NEW JS X SERIES

JCB has launched a new generation of tracked excavators following one of the biggest investment programmes in its history. The company has ploughed £110 million into developing its 'X SERIES' which will compete in a global tracked excavator market where almost 190,000 machines are sold every year. The new machines are already rolling off production lines, ready for our customers.

## EXTREME STRENGTH

It's taken 4 years of hydraulic, electronic and electrical development and thousands of hours of extreme endurance testing, to build you a machine that doesn't just look extremely strong, it is extremely strong.

## EXCEPTIONAL COMFORT

JCB have used ergonomic design, automotive quality materials and engineering excellence to deliver exceptional comfort. And with ride comfort and low noise to rival the best in the business, there's enough to make even the most demanding operator extremely happy.

## EXCELLENT CONTROL

4 years of hydraulic development combined with the latest Japanese components have delivered the best balance of controllability and efficiency.

## EXTREMELY EASY

Using latest ergonomic design and with the help of customer and operator feedback, the new 210X and 220X have been designed to be easy to use and easy to transport making it easy to get more work done.

For more information  
visit **JCB.com**

As you would expect, the X Series is an evolutionary product which also contains high levels of innovation. Operators have been at the heart of its development and will find it extremely comfortable to use. Main features include a cab which is 15% larger, a 15% improvement in fuel consumption and it's also 10% more productive.

## EXPERIENCE GREATER PERFORMANCE

JCB have invested 4 years of research and development and listened to 1,000 customers like you to build a machine that's ready to perform in the most extreme conditions; 55°C heat or freezing temperatures. A machine that works with extreme efficiency on the demolition site or non-stop in the quarry.

## EXTRAORDINARY ATTENTION TO DETAIL

Building the new 210X and 220X involved a huge investment in state-of-the-art, automotive style production facilities. JCB introduced new tooling, EPD coating, robot welding and established new relationships with many industry-leading suppliers to bring you not just great excavators but exceptional ones.

## EXTENDED SERVICE INTERVALS

The new 210X and 220X have been designed with greater productivity in mind and that means spending more time working and less time being serviced. Longer service intervals, quality parts and easy access to maintenance points all help to save you time and money.

## EXCEEDINGLY SAFE

JCB take safety very seriously and they make sure this forms an important part of the design process. So whether you're an operator, service engineer or site worker, JCB make working safer.



# NEW JCB MINI EXCAVATOR RANGE

## A TOUGH CHOICE MADE EASY

JCB's New Generation IT mini excavators make it easy to choose JCB when selecting your new machine.

Two new models - the 15C-I and 16C-I Premium - offer a choice of cab, canopy, conventional or zero tailswing and have been designed for the most demanding applications.

15C-I	16C-I
Operating weight standard dipper (kg)	1554/1664
Gross engine power (kW/hp)	11.7/15.7
Dipper options (m)	0.95/1.10
Dig depth - dozer up standard dipper (m)	2.27
Ground level reach standard dipper (m)	3.83
Bucket tearout (kN)	15.6
Dipper tearout standard dipper (kN)	8.8

### CHOOSE TOUGH



- 100% steel bodywork that withstands knocks but is cost effective to repair.
- Bushed dig end with hoses routed through the boom and dipper for durability.
- Solid cast rear door for maximum impact resistance.

### CHOOSE SIMPLE



- Graphite impregnated bushes that only require greasing every 500 hours.
- Premium or rental specifications for ideal machine choice.
- Flat glass that allows simple, low cost replacement.

### CHOOSE EASY



- 180° opening service door to access all cleaning and maintenance points.
- External re-fuelling access and easy pre-start checks.
- Spacious cab with excellent visibility and intuitive controls.

### CHOOSE QUICK



- 10 tie down points ensure compliant, speedy machine transportation.
- Sloping undercarriage design gives minimal soil retention and fast cleaning.
- No daily greasing with easy to access maintenance and cleaning means quicker turnaround times.

# JCB LAUNCHES

# SITE DUMPER

# RANGE

In response to an industry-wide forum that is bringing together new guidance and standards for site dumper safety in the UK, JCB has launched the 7T-I Front Tip Hi-Viz Site Dumper to address the key safety concerns experienced on construction sites today – visibility, stability and operator protection.

This is part of a nine-model line-up of site dumpers that are easy to operate, reliable, durable and quick to turnaround for a rental company. The line-up includes a one tonne high-tip, three tonne front and swivel tip with

a choice of transmissions, six tonne front and swivel tip and a nine tonne front tip model.

JCB's six tonne front-tip and swivel-tip dumpers, along with the range-topping nine tonne front-tip machine, are all offered with a foldable ROPS/FOPS Level II frame as standard. JCB also offers a folding ROPS frame or SITESAFE cab as an option. All three machines are equipped with a front camera to increase visibility, complying with ISO 5006:2017, along with a sequenced drive-inhibit system to ensure that operators are

correctly seated and secure before driving, along with a range of other safety features.

The JCB 7T-I Front Tip Hi-Viz model features a reduced skip height and unique design which delivers huge improvements in visibility, while a longer wheelbase and lower centre of gravity boosts stability. Operator protection is assured through a ROPS/FOPS Level II JCB SITESAFE cab, which incorporates an integrated protection system, potentially allowing the operator to remain in the cab while being loaded.



# FILTER OUT THE FAKES

MINIMUM EXPOSURE  
MAXIMUM PROTECTION

JCB Filters ensure you get maximum **PROTECTION** for your engine and all other major components.

Spend **£200** on Genuine JCB Filters and receive a **FREE JCB Baseball Hat**

Spend **£300** and receive some **JCB Sunglasses** too!



The offers are valid from 01/07/18 to 30/09/18 (or while stocks last) from Gunn JCB. All prices are subject to VAT. The offers are not available with the purchase of any other machine, attachment or product other than those stated and cannot be used in conjunction with any other offers relating to the purchase of the products stated. No offer can be redeemed for cash and no cash alternatives are available. With regard to free gift offers, only one free gift per transaction. The free gift cannot be sold. The free gift may be substituted with a free gift of similar value. JCB and/or Gunn JCB reserves the right to withdraw, alter or decline any product from sale and any offer or promotion without prior notice. These terms do not affect your statutory rights.

GUNN JCB



# 50 NEW MINIS FOR SPEEDY HIRE

With more than 200 locations nationwide, Speedy Services has one of the largest national networks in the sector and is a long-standing customer of Gunn JCB. Following the launch of our new 1 tonne New Generation mini excavators, we are delighted to confirm an order of 50 units of the new 15C-1 models from Speedy Hire. This will complement the hundreds of JCB minis in the company's current fleet. Andy Connor from Speedy confirmed that the new model will provide a great option for customers looking to hire a machine in sub-two tonne sector.

#### Features include:

- 24% more interior space
- 1.5 – 1.6 tonne weight
- 11.7kW Perkins engine
- Optimum weight distribution
- Improved engine access with full access to the engine bay and battery
- Swing away counterweight



*"The 15C-1 is more lightweight than the rest of the range but has all the same features and benefits. It will suit hirers looking for a machine that can fit on their current trailers and work productively on more compact sites. The body is predominantly steel so it should be very durable."*



# RUTTLE PLANT IS OUR FIRST JCB 220X SERIES CUSTOMER

JCB's new X SERIES range of excavators has been met with wide acclaim across the board since their launch earlier in the year. We're very pleased that Ruttle Plant was our first customer to order four of the new machines after attending the VIP launch on 21st March at JCB World Headquarters.

These new X Series machines have been purchased to extend their current range of JCB machines which includes: dumpers, loadalls, backhoe loaders and rollers.

As well as the head office based in Chorley, Lancashire, the group has divisions in Preston, Chesterfield and Lichfield.



# OUT AND ABOUT WITH GUNN JCB

We're right in the middle of show season and with the fabulous weather so far, we've been entertaining crowds of people on our stand wherever we go.

## CONNECTING FUTURES IN THE WEST MIDLANDS – TRANSPORTATION INFRASTRUCTURE ROADSHOW

We attended two days of a six event roadshow in March aimed at students considering a career in the rail, civil and highway sectors. On 13th March, we attended the roadshow at Walsall College and on 14th at Birmingham Metropolitan College to offer advice on pursuing a career in construction including apprenticeship and training opportunities. We shared a stand with one of our customers, Chase Plant and displayed a Beaver Powerpack alongside an 8008 Micro Excavator which proved to be a great attraction.



## STAFFORDSHIRE COUNTY SHOW

A popular event in our annual show calendar, the Staffordshire County Show was held on 30th and 31st May 2018 at Staffordshire County Showground in Stafford. We had a fantastic display of machines including: a full range of mini and midi excavators, a JCB Hydradig, a scissor lift, generators, site dumpers, a 3CX Compact and a 205T Skid Steer.

The JCB Dancing Diggers were the stars of the show on both days, demonstrating the versatility of JCB machines with choreographed manoeuvres to music and patriotic red, white and blue fireworks. The sunshine helped to draw the crowds – in particular to the Gunn JCB stand – particularly following the fantastic performances which took place in the main ring adjacent to our stand.



## THE ROYAL CHESHIRE COUNTY SHOW

Sitting squarely in our territory, this is the second year we have attended this prestigious and hugely popular show. Glorious weather throughout the weekend ensured that our stand on both Tuesday 19th and Wednesday 20th June was packed. We were fortunate to be located right by the sheep section and shire horse ring which always draw a crowd. We had new mini excavators, a JCB Hydradig, generators and a scissor lift on display. As well as our own team, we were fortunate to have representatives from JCB Finance on hand over the 2 days to explain the latest financing options.

## RHUG COUNTRY FAIR

Taking place on the fabulous Rhug Estate in Denbighshire, this show is always very busy. This year, it took place on 7th and 8th July 2018 and once again it didn't disappoint.

We entertained many families on our stand which had a range of machines on display. We're currently processing enquiries from the show.



## ABERYSTWYTH AND CEREDIGION COUNTY SHOW

Show season shifted west on 9th June when we attended the Aberystwyth and Ceredigion County Show with a new 19C-1 mini excavator, a Hydradig and HTD5 taking pride of place on the stand. It was great to have operators queuing up to try our operator challenge where they took the controls of a new 19C-1 mini excavator to 'hook a disk' - a great way to demonstrate the machine's ease of operation. Successful participants received a goodie bag containing a JCB keyring and water bottle. Another light-hearted game also drew attention from a wide range of visitors. With a JCB rucksack, hat, socks and travel mug of offer as first prize, our 'guess the number of ping pong balls in the rucksack' game proved very popular.

We were delighted to win a trophy for the 'Best Trade Stand' and we were very happy to make a donation to Guide Dogs for the Blind Association on the day.

## LONGRIDGE OPEN DAYS

As a company, we participate in many shows and events but we are always keen to host our own open days for customers that find it easier to come to us. Understanding that our customers prefer to visit us out of working hours, we held two open days at our Longridge depot on Friday 6th July (12 noon-7pm) and Saturday 7th July (9am-1pm).

A full range of machines was displayed each day including: the new 220X Excavator and 7T-1 Hi Viz Dumper, 19C-1 Mini Excavator, S1930E, 3CX Compact, Hydradig and VMT 260-120 Roller. Thank you to Bill Holden who brought along his JCB 1 fitted with a Petter engine and thank you to Dave Holden for displaying his JCB model collection at our open days which visitors enjoyed looking at. Our exclusive open day special offers included: JCB Beaver Pack and JCB HM25 Anti Vibration Breaker for £1900 + VAT and 3CX breakers at only £3750 + VAT and we are now busy processing orders. Many customers also took the opportunity to purchase JCB genuine parts whilst at the depot and we had a number of machine enquiries too. A complimentary BBQ was served to customers during both days which they enjoyed whilst browsing and all visitors were given a goodie bag as a thank you for attending. We had excellent feedback on the format of these days and thanks to their huge success, it is something we are definitely looking to repeat.



## BRITISH PIG & POULTRY FAIR

We attended the British Pig & Poultry Fair with two generators; a G19RS Generator and G41QS Generator which are both ideal power units for farming applications.

The event, which took place in May, was very well attended and we took a number of enquiries for both our JCB QS and RS generators.



## WHERE YOU CAN FIND US NEXT:

### • Anglesey Agricultural Show - 14th and 15th August 2018.

Tŷ Glyn Williams, The Showground, Gwalchmai, Holyhead, Anglesey. LL65 4RW

### • Speedy Expo 2018 - 31st October and 1st November.

Liverpool Exhibition Centre, Kings Dock, Liverpool. L3 4FP



# NEW JCB TELETRUK LOGISTICS RANGE

The JCB Teletruk is still the world's only telescopic counter balance forklift. Its unique side mounted boom design provides unrivalled forward visibility and the machines have been widely sold into many niche sectors thanks to their combination of performance, manoeuvrability and ability to load from one side. The new Logistics range has been introduced to meet the demands of the logistics sector and has standard features and options that have been agreed, following comprehensive consultation with customers. Two basic models are available; the TLT 25D and the TLT 27D; both of which are also available as LPG models. With lifts heights of 1.2 and 1.4 tonnes to 2m respectively, both models have an impressive 4.88m turning circle.

**The JCB Teletruk Construction Master and Wastemaster models, with a range of high spec features as standard, take the full range to sixteen models.**



## DEPOSIT CONTRIBUTION & OPTIONAL PAYMENT PAUSE

**AVAILABLE ON JCB TELETRUK LOGISTICS RANGE**

Available on selected models on orders placed by 30.09.2018. UK Business users only. Terms Apply.

## CONTACT GUNN JCB NOW

£1,250 Deposit Contribution available on JCB Teletruk Logistics Range with optional 3 month payment pause (interest charges still apply) followed by 60 monthly payments from £475. With a weekly equivalent of £110, this hire purchase agreement is based on a maximum advance of £25,003. This offer is available on machines ordered by 30.09.2018 via participating dealers.

# WASTEMASTERS HIRE GOES YELLOW WITH NEW JCB MACHINES

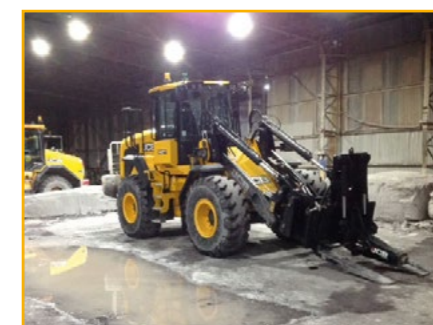
Coventry-based Wastemasters Hire has turned its waste and materials handling fleet completely JCB yellow with its latest order of seven new machines. Their latest purchases include: 437 and 457 Wheeled Loaders, two 560-80WM Loadalls and three JS20MH Wheeled Material Handlers and have been bought to meet the growing demand for short-term hire of machines in the waste and recycling sector. Parent company, Tom White Waste (TWW) already has a fleet of JCB machines. Established in the waste sector for 40 years, TWW has previously used competitive machines over those four decades - but with the latest purchase it will now be 100% JCB.



# WELSH SLATE

Welsh Slate is the world's leading manufacturer of high-quality slate which is used in an unparalleled range of prestigious and design-led applications including roofing, flooring and cladding to name a few. Produced at Penrhyn Quarry in North Wales, the slate is uniquely 500 million years old and recognised as the finest natural slate in the world. We are very proud to work with this historic business which has been in operation for over 400 years! They hire a JCB 427 Wheeled Loader from Hawk Plant, complete with a horizontal hammer attachment which is used to split large block sections of slate in the quarry before it enters the processing plant. Andy Smith is Operations Manager at the quarry and was involved in the specification of the high performance machine and attachment:

*"We run quite a bit of JCB equipment on site and we've been working with Gunn JCB for a number of years. The parts and service back-up is excellent and this machine was the perfect spec for our requirements, so we didn't hesitate to specify JCB."*



# our depots

## ALTRINCHAM

Atlantic Street, Altrincham,  
Cheshire. WA14 5DN  
Tel: 0161 941 2631  
Fax: 0161 942 3399

## HEREFORD

Twyford Road, Rotherwas,  
Herefordshire. HR2 6JR  
Tel: 01432 269304  
Fax: 01432 273725

## ISLE OF MAN

Unit 34, Spring Valley Trading Estate,  
Braddan, Douglas. IM2 2QS  
Tel: 01624 664866  
Fax: 01624 664888

## MARCHINGTON

Unit 34, Marchington Industrial Estate,  
Stubby Lane, Uttoxeter. ST14 8LP  
Tel: 01283 734198

## PRESTON

Shay Lane, Preston,  
Lancashire. PR3 3BT  
Tel: 01772 782051  
Fax: 01772 784022

## RUTHIN

Celtic Works, Ruthin,  
Denbighshire. LL15 1LY  
Tel: 01824 702686  
Fax: 01824 702406

## SHREWSBURY

5B, March Way,  
Battlefield Enterprise Park,  
Shrewsbury, Shropshire. SY1 3JE  
Tel: 01743 444695  
Fax: 01743 440943

## STOKE-ON-TRENT

Victoria Road, Stoke-on-Trent,  
Staffordshire. ST4 2HY  
Tel: 01782 744943  
Fax: 01782 744713

## WEST MIDLANDS

Halfords Lane, Smethwick,  
West Midlands. B66 1EL  
Tel: 0121 500 1720  
Fax: 0121 500 1721

# USED MACHINES FOR SALE



### 2012 - JCB 437 Super High Lift

Super high lift arms with quick hitch  
and shovel. 6,589 hours of use.

**£45,000** ex VAT



### 2015 - JCB 6T Dumper

Tidy straight dumper.  
555 hours of use.

**£18,250** ex VAT



### 2013 - JCB JS240 LC

1 owner from new. Full JCB service history from new.  
5,420 hours of use.

**£POA**



### 2008 - JCB 540-I70

4,779 hours of use.

**£31,950** ex VAT



### 2017 - JCB JS131 LC+

Ex demo JS131 LC+ comes with 3 buckets.  
248 hours of use.

**£61,950** ex VAT



### 2014 - JCB 85Z-I

Ex demo, 3 buckets, air conditioning,  
hammer pipework. 414 hours of use.

**£41,000** ex VAT

For more information,  
call **Morgan Aherne** on **07740 826189** or  
email **morgan.aherne@gunn-jcb.co.uk**

For enquiries regarding any of our products featured in this publication, please email [enquiries@gunn-jcb.co.uk](mailto:enquiries@gunn-jcb.co.uk)



Find the very latest information on the JCB product range at: [www.gunn-jcb.com](http://www.gunn-jcb.com)

**JCB**

**GUNN JCB**